



 **BRADY®**

Identify and protect people, products  
and premises



BREDI S.r.l.

Via dei Falegnami, 2 - 41049 - Sassuolo - MO - ITALY

T: +39 - 0536 803 561

[www.bredi.it](http://www.bredi.it) - [vendite@bredi.it](mailto:vendite@bredi.it)





# We identify and protect people, products and premises

Our solutions help customers increase safety, security, productivity and performance and include reliable identification labels, safety solutions, industrial sign & label printers, scanners and label design software.

If you need a reliable identification solution that stays in place, and remains legible, talk with us before you decide.



88% of Fortune 500 companies use Brady labels and identification solutions to clarify and communicate.



Brady is one of the world's largest suppliers of Lockout/Tagout, and helps increase maintenance safety in top companies.



70% of commercial aircraft in the world are identified by Brady identification solutions.



Brady nameplates and markers are used in the SpaceX Falcon 9



# We are manufacturers

We manufacture our products ourselves, and we take full ownership and pride in the solutions we deliver. We can adapt any of our products to customer specifications, and we provide brand new solutions that answer emerging customer needs.

## Our manufacturing capabilities include:

- Coating
- Converting
- Extrusion
- Digital printing
- Silk screen printing
- Flexographic printing
- Print on-demand solutions





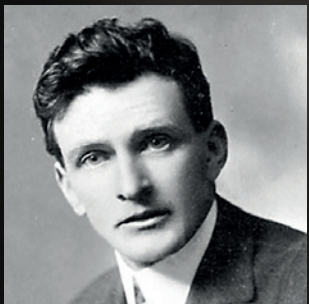
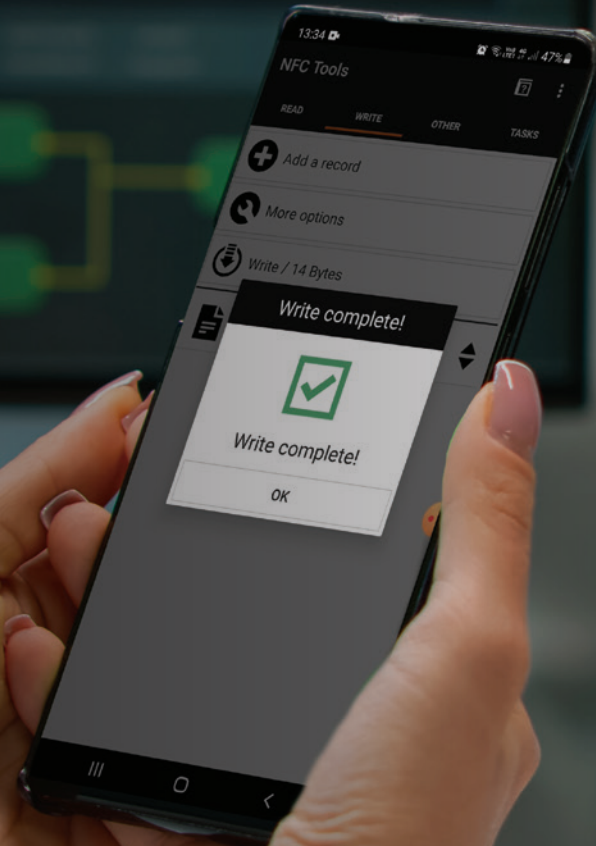
# We innovate continuously

Ever since Brady started in 1914, we have been at the forefront of innovation, anticipating and exceeding customer needs through a unique combination of capabilities, expertise and talent.

Today, Brady still provides unrivaled solutions whenever and wherever needed.

## Examples of our commitment to innovation are:

- a unique digital identity for any object to enhance its visibility throughout the supply chain with a complete and reliable RFID solution
- fast and reliable identification automation with integrated label print and apply systems for complete traceability
- high performance, dedicated label materials that stay attached and remain legible on any surface in any context
- unique safety solutions including the SafeKey padlock that enables elaborate Lockout/Tagout programmes with 700% more lock & key combinations



“We do things others  
don’t, in ways they can’t.  
**This is the Brady way.**”

**Bill Brady**



# Industry expertise



## Mass Transit

Reliable sleeves, labels and tags that do not generate smoke or toxic fumes, enable fast maintenance interventions while protecting passenger safety.



## Aerospace & Defense

Quality labels, sleeves and tags that resist extreme heat, cold, fuel and generally harsh environments maximise maintenance efficiency and vehicle availability.



## Marine

Keep ships, platforms and dockyards safe and high performing with easy-to-use identification solutions that minimise risk and maximise maintenance efficiency.



## Electrical

When entire streets go dark, and time pressure is fierce, quality in- and outdoor cable and component labels help restore power faster.



## Renewable energy

Maximise power generation and supply with reliable identification and safety solutions that enable maintenance professionals to complete fast, efficient and safe interventions.



## Datacom

Resolve network issues efficiently, by enabling greater incident recovery speeds and faster troubleshooting with cable and component labels that stay attached.



# Industry expertise



## Healthcare

Enable skilled professionals to deliver great care with optimised patient identification and treatment tracking.



## Pharmaceutical

Reliable identification and anti-counterfeit tracking labels support compliance, proper product usage and supply chain security that help maintain company reputation.



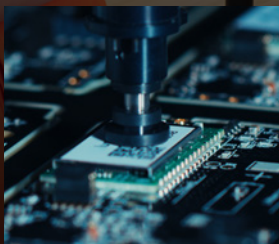
## Laboratory

Never lose a sample with specialised labels that stay attached and remain legible, when stored in liquid nitrogen or exposed to chemicals.



## Automotive

Keep components identified for their lifetime with reliable auto-apply labels that resist heat, brake fluid, oil and aggressive solvents to enable complete traceability.



## Electronics

Reliable traceability labels coupled with fast printers and flexible label feeders enable fully automated and affordable printed circuit board tracking.



## Manufacturing

Protect production output with precise, small & high volume label and rating plate printing at your location.



# Industry expertise



## Chemical

Optimise workplace safety and efficiency with chemical resistant identification and equipment status management tags.



## Oil & Gas

Enable field operators to easily navigate pipes, vessels and instruments with fully identified physical plants.



## Warehouse

Greater order accuracy and shorter delivery lead times can be achieved with reliable warehouse identification labels.



## Transport & Logistics

Create certainty for products, components and items in transit with compliant lorry signs and quality cargo seals.



## Food

Signs, pipe and floor markers with low contamination risk offer new opportunities to increase workplace safety and efficiency.



## Beverage

Markers that stay attached to wet and condensed surfaces enable new maintenance and operational efficiencies.



# Smart identification

Gain efficiency, increase sustainability, and improve the customer experience by giving any product a unique digital identity that enhances traceability, visibility and interaction throughout the supply chain, all the way to the end-customer.



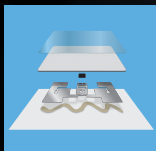
## Industrial RFID Labels

Available in various materials and read ranges, our reliable RFID labels stay attached to industrial assets, effectively giving them unique digital identities.



## On-metal RFID Labels

Our on-metal RFID Labels circumvent Faraday's laws, and still emit radio signals, even when applied to metal surfaces.



## Sensing

High performance sensors in battery-free labels enable wireless temperature or moisture data capturing.





# Smart identification

Brady offers a uniquely complete, and fully customisable, RFID solution to solve specific needs. Next to reliable RFID labels, our offer includes custom programmable scanners, RFID printers and complete solution integration at your premises.



## Reliable RFID scanners

Our industrial-grade portable and fixed RFID scanners ignore line of sight and capture asset data from a distance.



## Custom app creation

Seamlessly integrate relevant asset data in your track & trace processes with custom scanner and smartphone apps.



## Print & program

Easily print & program additional RFID labels at your premises to complete your fully sustainable Smart identification solution.



# Wire and cable identification

Keep cables identified to support fast maintenance and traceability, and maximise the availability of important assets. Our reliable wire and cable identification solutions are present in some of the most critical applications in the world.



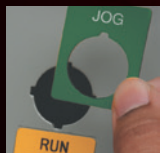
## Wrap-around labels

Our (self-laminating) wrap-around labels offer excellent print quality and resistance versus extreme temperatures, chemicals, fuels and abrasion.



## Flag labels

Flag labels maximise space to print cable identification information on. P- and T-shaped flags also minimise the adhesive contact with fibre optic cables.



## Component labels

We offer a full range of electrical and datacom component labels to identify patch panels, outlets, terminal blocks, switches and push buttons.





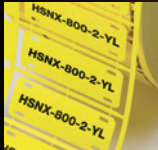
# Wire and cable identification

Our wire and cable identification solutions are designed to stay attached, and remain legible. Even when launched into space, our labels stick and stay to keep critical components identified.



## Hook labels

Our one-of-a-kind BradyGrip™ Print-on Hook Material can be printed easily and hooked onto VELCRO® ONE-WRAP® Tape.



## Tags

Our tags with high tear, solvent and heat resistance, available in many colours, are ideal to identify thick cables and cable bundles in challenging environments.



## Sleeves

Our printable, smudge-proof sleeves are resistant to common fuels, fluids, lubricants, solvents, heat and fire with minimal smoke emission.



## Clip & slide-on solutions

We offer a range of sturdy carriers that can be slid over or clipped onto a wire to house easily updatable, printable inserts.





# Product identification

Ideal for asset tracking, component tracing, equipment identification, rating plates, printed circuit board labelling and RFID applications, our reliable product identification labels enable complete traceability for any product or component.



## WorkHorse Series

Our WorkHorse labels are made out of heavy-duty materials. They are ideal for reliable barcoding, rating and serial plates, asset and inventory tracking and general identification.



## MetaLabel Series

Our metallised labels meet a variety of industry specifications and provide a reliable, cost-effective and on-site printable alternative for rating plates and asset tags.



## UltraTemp Series

UltraTemp labels, available in auto-apply and anti-static versions, remain untouched by PCB assembly, equipment and component manufacturing processes.



# Product identification

Our product labels are researched and tested to solve challenging identification needs throughout specific production processes. Designed for reliability and application speed, they are used by the worlds' most trusted manufacturers.



## **ToughBond Series**

Our ToughBond labels feature strong adhesives that stick to complex industrial surfaces, including rough, powder-coated and low surface energy assets.



## **CleanLift Series**

CleanLift labels are ideal for temporary identification. They do not leave behind any residue and can be removed without damaging surfaces.



## **Defender Series**

Defender labels provide irreversible visible or covert evidence of product tampering. Options include fracturing labels, footprint labels and RFID solutions.



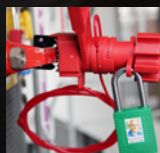
## **VisAlert Series**

VisAlert labels offer a visual indication of water or heat exposure. They are used to support maintenance, prove product misuse, and counter fraud.



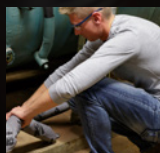
# Safety and facility identification

Our safety and facility identification solutions bring go for zero and workplace safety strategies to life in workplaces worldwide.



## Lockout/Tagout

Our complete Lockout/Tagout offer includes innovative SafeKey padlocks, lockout devices, procedure management software and services for fast implementation.



## Spill Control

Easily remove or prevent spills from spreading with our wide range of Spill Control solutions that can absorb up to 25 times their weight in fluids.



## Visual Tagging

Our reliable equipment status management system supports efficient safety inspections and shares the most recent safety status on the equipment itself.






# Safety and facility identification

In addition to our solutions, we offer safety services and advice, based on worldwide best practices, to help achieve maximum workplace safety and risk prevention.



## Safety signs

Our fully customisable safety signs are available on a wide range of reliable materials and can be delivered fully printed or as consumables for your Brady printer.



## Pipe marking

Reliably identify hidden pipe contents and their flow direction with fully customisable markers to caution employees and to support efficient maintenance.



## Area marking

We offer quality floor marking, loading dock labels, bin labels and visual lean manufacturing labels to support safety and efficiency in a wide range of workplaces.



# Supply chain security

Be certain, and properly seal logistics processes to prevent fraud, theft, discussion and time loss in the supply chain. Choose from a wide range of highly customisable solutions to transport your assets and property safely, securely, and in full compliance.



## Seals

Transposafe seals offer easily visible indications of cargo tampering. They are tested and certified, and can be fully customised.



## Sealbags & security envelopes

Easily send sealed valuable goods packages to provide immediate tampering visibility.



## Security tapes & labels

Prevent fraud, theft and discussion with labels that feature a unique design, consecutive numbering or warnings.



## Medical transport bags & cases

Reusable and suitable to transport biological materials, our medical transport bags also offer options for wireless temperature monitoring.



# Design & track

Advanced label design and tracking software complete your identification and facility management solutions to push productivity forward.



## Design any label or sign

Identify cables, products and facilities by designing compliant identification in a few clicks using 20+ Brady Workstation professional label design apps.



## Custom RFID apps

Home in on specific items, check inventories and cargo completeness, facilitate picking and installation, and monitor temperatures with custom designed RFID apps.



## Easily track inventories

Efficiently track, check and manage assets or inventory from any wifi-enabled place and easily print any item label with FlexTrak.



## Auto-report on inspections

Easily initiate pre-programmed equipment safety inspections in the field on a smartphone with SafeTrak, and auto-report back to the office.



## Centralised procedure management

Create, scale, update, validate and sustain visually instructive safety procedures in multiple facilities. Print or provide access to specific tablets and smartphones.





# Create

Our versatile label printers create a wide variety of reliable identification labels and signs at your premises, using only a couple of blank or partially printed label rolls.



## Portable printers

Quickly print labels in the field with our light-weight and easy-to-use portable printers that are built to last in the toughest working environments.



## Benchtop printers

Easily print large volumes of specialised labels and signs that stay attached to every surface even when exposed to extreme temperatures, chemicals or solvents.



## Printer-Applicators

Nothing beats a BradyPrinter, except an automated one. Combine crisp printing with accurate label placement at the speed of your production line.



## Print & Program

Program embedded RFID chips while printing on your labels, give physical objects a unique digital identity and unlock the benefits of industry 4.0.







# Your solution, delivered anywhere

Brady Corporation can help you identify people, products and premises anywhere in the world. Our plants, offices and distributor network span the globe, and can get your desired solution delivered anywhere.





**Belgium & Luxembourg**

Tel: +32 (0)52 45 79 34

benelux@bradycorp.com

**Czech Republic**

Tel: +420 776 302 229

czechrepublic@bradycorp.com

**Denmark**

Tel: +45 66 14 44 00

denmark@bradycorp.com

**France**

Tel: +33 (0) 3 20 76 94 48

france@bradycorp.com

**Germany, Austria & Switzerland**

Tel: +49 (0) 6103 7598 660

germany@bradycorp.com

**Hungary**

Tel: +36 23 500 275

hungary@bradycorp.com

**Italy**

Tel: +39 02 26 00 00 22

italy@bradycorp.com

**Netherlands**

Tel: +31 (0)70 323 62 98

benelux@bradycorp.com

**Norway**

Tel: +47 70 13 40 00

norway@bradycorp.com

**Poland**

Tel: +48 22 104 6262

poland@bradycorp.com

**Qatar, Saudi Arabia & UAE**

Tel: +971 4881 2524

me@bradycorp.com

**Romania**

Tel: +40 799 233 910

romania@bradycorp.com

**Slovakia**

Tel: +421 902 939 406

slovakia@bradycorp.com

**South Africa**

Tel: +27 11 704 3295

africa@bradycorp.com

**Spain & Portugal**

Tel: +34 900 902 993

spain@bradycorp.com

portugal@bradycorp.com

**Sweden, Finland, Estonia, Latvia,****Lithuania**

Tel: +46 (0) 8 590 057 30

sweden@bradycorp.com

**Turkey**

Tel: +90 212 264 02 20

turkey@bradycorp.com

**UK & Ireland**

Tel: +44 (0) 1295 228 288

uk@bradycorp.com

# We identify and protect people, products and premises.



Search for: EUR-332-EN



Y376985



To help minimise our impact on the environment, Brady limits its number of reprints.

Updated versions are always available for download on [www.bradyeurope.com](http://www.bradyeurope.com).

**BREDI S.r.l.**

Via dei Falegnami, 2 - 41049 - Sassuolo - MO - ITALY

T: +39 - 0536 803 561

[www.bredi.it](http://www.bredi.it) - [vendite@bredi.it](mailto:vendite@bredi.it)